



EROAD

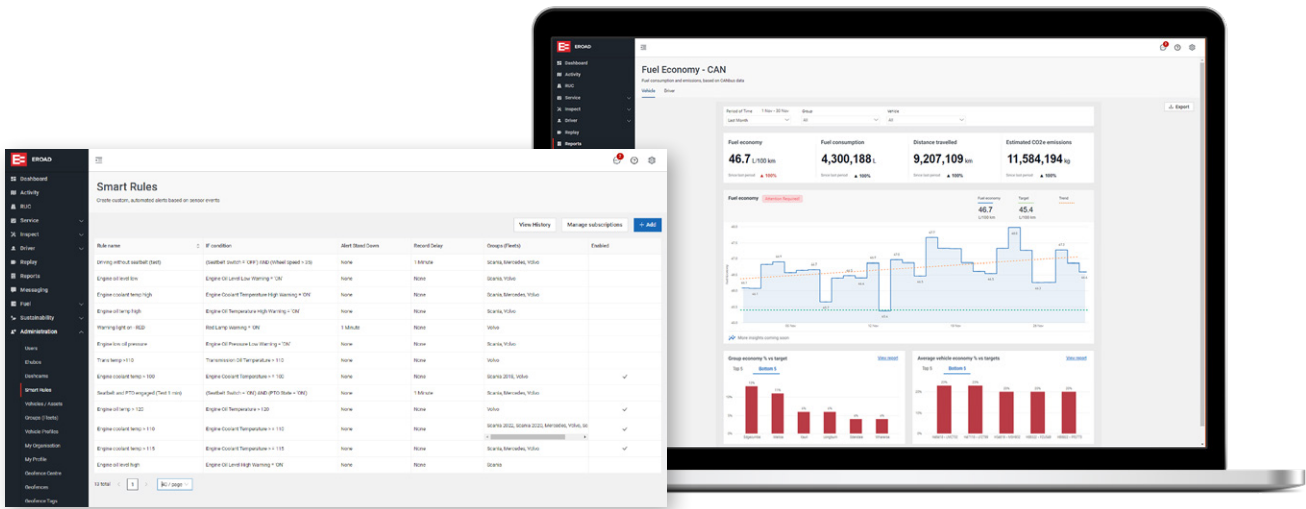
EROAD CAN Bus Connect

Boost Heavy Vehicle Health

Leverage the power of your heavy vehicle ECM data, and get two powerful products in one with EROAD CAN bus Connect.

Smart Rules is an advanced, configurable alert engine. It's a powerful tool for fleets that are serious about preventive maintenance. With Smart Rules, you're in control. Choose from over 20+ datapoints*, with customisable thresholds and hundreds of rule combinations.

Fuel Economy is our first fuel report that consumes ECM fuel data, for advanced monitoring. Set fuel burn targets by fleet and vehicle, for meaningful benchmarking and highly accurate performance, right down to driver level. It's our most powerful report to help you control and reduce fuel cost.



Reduce cost

- Help prevent costly repairs from engine failures
- Easily investigate your biggest fuel burners
- Identify your worst performing vehicles for replacement



Better fleet health

- Help prevent major engine failures by monitoring key engine health metrics
- Get live notifications if something isn't right with your vehicle's engine
- Improve workshop efficiency by prioritising the jobs to be done first



Be in control

- Decide who in your team gets notified
- Choose only the datapoints that matter to you
- Reduce annoying emails with configurable alerts

*Number of datapoints monitored is dependent on plan. Restrictions on available data apply to certain makes and models. See specifications.



FEATURES

EROAD CAN Bus connect, Fuel Economy and Smart Rules have been designed in conjunction with EROAD customers, and rigorously tested across 1,500 vehicles.

Fuel Economy Report

- **Easily drill down** – Go from a view of your total fleet fuel burn, right down to individual drivers and vehicles
- **Meaningful benchmarking** - Set specific fuel economy targets at a vehicle, group or total fleet level
- **Accurate fuel data** - View actual fuel burn vs. target across drivers, vehicles or groups
- **Measure Sustainability** - Get an estimate of CO2 emissions based on fuel burn*
- **Share Reports** - Export and share fuel burn reports with key stakeholders, or to demonstrate fleet efficiency gains

Smart Rules

- **Important alerts only** - Choose the alerts that are most important to you – such as engine temperature.
- **Highly configurable** - Use AND/OR logic to combine rules, set minimum and maximum thresholds and determine stand down periods.
- **Opt-in users** - Subscribe users in your business to alerts that matter to them
- **Quick check** - Self-check on alert set up screen shows if the alert will work for your vehicles and how many
- **Alert history** - View last 30 days of alerts for a vehicle
- **Choice of data plans** - Choose a plan based on how many ECM datapoints* you want to monitor, up to 6 (ECM Essential), or up to 20 (ECM Advanced)

*Note that not all datapoints are available for all makes & models. More information available on request.

DATA PLANS

ECM Essential

Fuel Economy & Smart Rules with monitoring of up to 6 datapoints.

ECM Advanced

Fuel Economy & Smart Rules with monitoring of up to 20 datapoints.

SPECIFICATIONS

Connectivity	The EROAD CAN Bus cable is only compatible with the 4G Ehubo 2.2. Data is sent to MyEROAD when the Ehubo device is in mobile coverage. If there's no mobile coverage, data will be stored by the Ehubo device and uploaded when back in coverage.	
Dimensions	CAN bus cable available in two lengths <ul style="list-style-type: none"> • 3 metre • 7 metre 	
CAN bus protocol	J1939	
Make/model compatibility	Available for heavy vehicles only. Datapoint availability may vary between brands. For specific information on which models are available, talk to our team. <ul style="list-style-type: none"> • Volvo • Scania • Heavy Fuso • Heavy Hino • Heavy Isuzu • Merc • Iveco • Kenworth • Freightliners • Western Stars • DAF Trucks • MAN 	
Datapoints	ECM Datapoints available include: <ul style="list-style-type: none"> • Engine temperature • Brake pedal position • Accelerator pedal position • Wheel speed • Engine RPM • Fuel consumption • Fuel level And many more. Actual datapoint availability varies between vehicle models.	
Installation	Requires professional installation	